

Tenā koutou, Malo e lelei, Kia orana, Kamusta, नमस्कार, Namaste, 안녕하세요, Talofa lava, สวัสดี and Bula vinaka!

Welcome to the beginning of a new term! This term we are relaunching our PB4L (Positive Behaviour for Learning) Expectations, which are the foundation of our school. You will have heard and seen our BRS Heart, which has been part of Bailey Road School for a long time so they have just been refreshed and updated.

Over the next few weeks you will notice the new PB4L signage going up and we will share information and resources on Seesaw so you have an insight into what this looks like, how it works and the language used. We are all in this together.

### PARENT TEACHER CONFERENCES

It's that time of year where parents meet with their child's teacher and discuss the learning that has been happening at school.

Wednesday 5 August from 2pm - 6.30pm  
Thursday 6 August from 2pm - 6.30pm

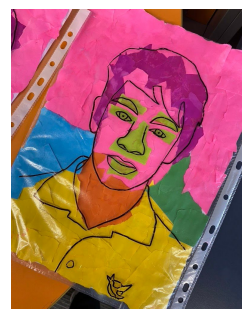
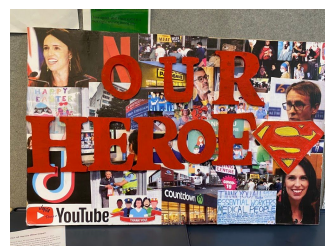
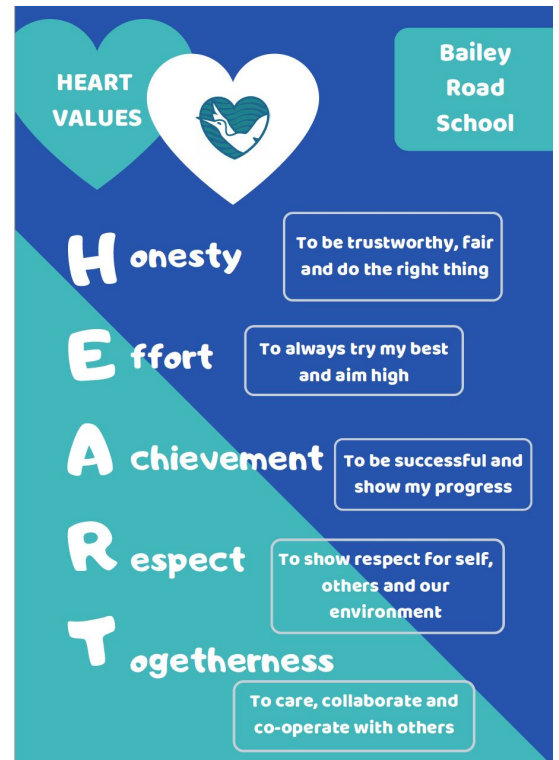
Bookings for your conferences are made through our school app - **Skool Loop**. This is a free app that you can download and is very useful, a quick way to check the calendar, read the newsletter and notices, send an absence and of course book your conference. If you have any difficulties, please call the office 570 4619 and they will help you book a time.

### WALKING SCHOOL BUS MEETING

If you are interested in being part of this great programme, please come to the Whare at 2pm tomorrow (Thursday 23 July) to see how easy it is to get involved.

### ART TRAIL

Our first ever Art Trail was held in the last week of Term 2 and it was AMAZING. A HUGE thank you to Miss Flashman for her hard work in organising this event. Bailey Road School has some truly creative, artistic and talented students. Artwork from this event will feature around our school and be shared via our BRS Facebook page. Well done everyone - can't wait to see what will be happening this term....



## *A word from the Principal - Mr Kelly.....*

Tēnā koutou katoa

I have the pleasant, but sizeable task, of reading through all of our mid-year reports before they are sent out to you at the end of next week. Our reports this year are focused upon presenting the attitudinal and academic information in a graphic, pictorial form so that it is easy to understand at a glance. We have chosen to concentrate the written component of our report on the general comment and students' own comment upon their work and experience at school.

I really enjoy reading our students' reports but have particularly enjoyed reading their personal comments. A great many of our tamariki talk about realising their weaknesses and the work they are willing to do to improve in those areas. Many write about how they want their whānau to be proud of them - as I am sure they are. Many children wrote that their favourite part of school was the opportunity we provide through writing, art, music and technology etc to allow them to express themselves creatively. This is a very heartening insight, since one of the key roles of an education system is to spark creativity and the belief in our students that their learning has real purpose and prepares them for the opportunities that will present themselves when they grow into the marvelous adults they are poised to become.

Ngā mihi nui - Ray Kelly

### *Persuasive writing by Leilani - Year 2*

You must keep the school clean because you don't want your school to be stinky at all. You just want your school to smell nice. Don't drop your rubbish on the ground. Put your rubbish in the rubbish bin.



## **CURIOSITY, PURPOSE AND WONDER - Māhirahira, Aronga, Pohēhē**

### **Civilisation**

#### **The BIG idea...**

We are a diverse school, with many cultures being represented within our community. Through gaining a deeper understanding as to what culture is, how culture has influenced our student's lives and how cultures have evolved over time, our students will be able to understand and appreciate the key role that culture plays within and across the world today.

The schoolwide rich question is - **How do historical and modern cultures influence our lives today?** Each class will have the overarching schoolwide CPW rich question displayed along with their learning as it unfolds.

